

TIOGA OEM KNOCK DOWN FRAME

DOOR WORX offers in 16 gauge galvanized steel. Frames are knock-down construction. **FRAMES** are available for 1 3/4" thick doors as standard. Precision bolted corners provide a smooth attractive design and allow easy installation. **FRAMES** come standard with a prime coat ready to be finished white or bronze. Factory applied finish coat paint is available in many colors. Contact customer service for pricing and quantities required, for factory finish paint.

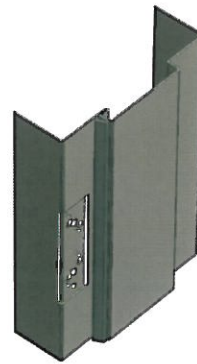
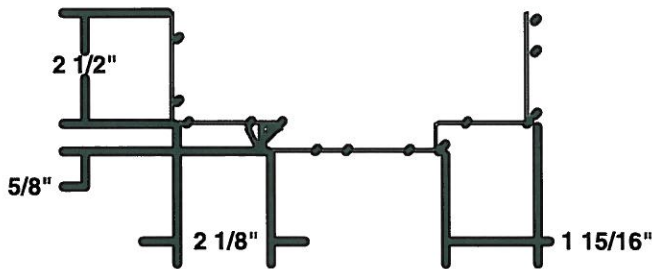
STANDARD FEATURES:

- 16 gauge for 1-3/4" doors
- Precision bolted corners
- Galvanized (standard)
- 7 gauge hinge reinforcements
- Heavy duty strike reinforcements
- Meets ANSI standards
- Universal 4 1/2" hinge prep

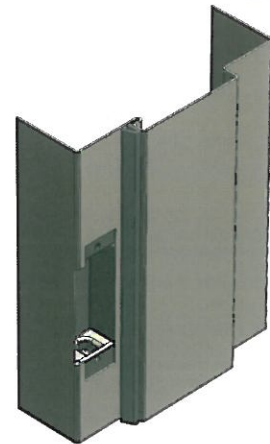
METAL BUILDING FRAMES

- Single Swing Frames / Non-Handed
- Pedestrian Door Frame Head
- Pedestrian Door Frame Hinge Jamb
- Pedestrian Door Frame Strike Jamb
- Sill Section
- Head to Girt Clip and Screw Pack
- K.D. Frame Assembly Details

STOCK PROFILE



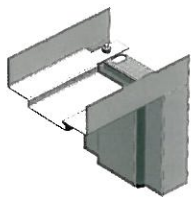
**HINGE
 REINFORCEMENT**



**STRIKE
 REINFORCEMENT**

TYPICAL BASE AND WALL ANCHORS

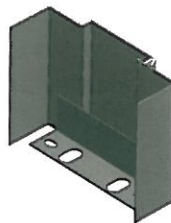
**KD HEAD
 CONDITION**



KD JAMB PROFILE



**KD JAMB SILL
 CONDITION**



Door Worx 2010

CORPORATE HEADQUARTERS: 18 Richard Drive, Lititz, PA 17543 . **PHONE** 1-717-735-6770 . **FAX** 1-717-626-5652

OTHER REGIONAL OFFICES: INDIANA

www.doorworx.com